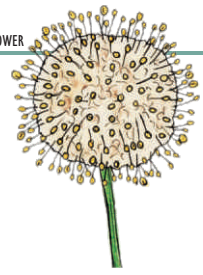
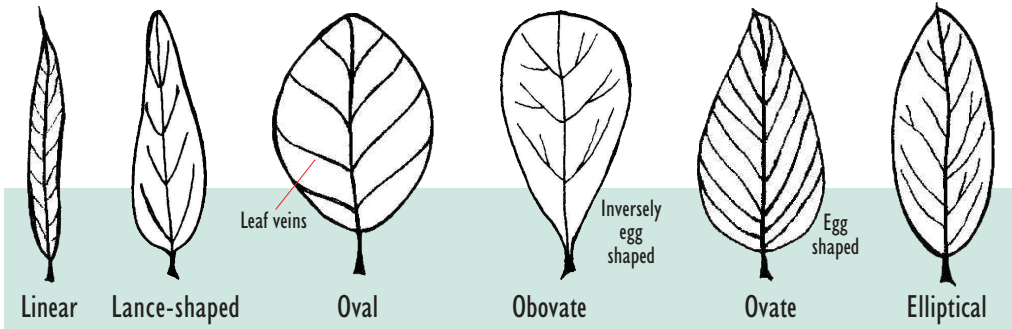
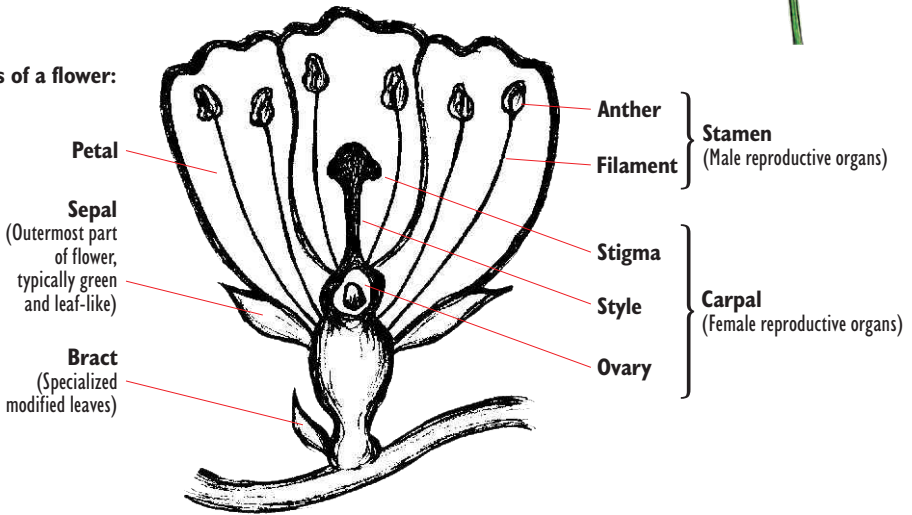


Most of the terms in this guide are explained in the text right on each species page (with the more technical term in brackets). However, the diagrams below may help to highlight some of the more commonly used plant terms in this guide.

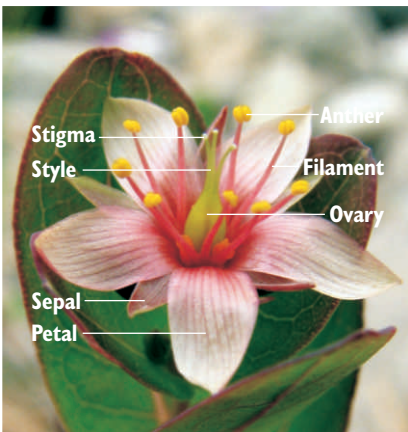


Parts of a flower:



Common leaf shapes

ALL ILLUSTRATIONS © JENNIFER MCKINNON



© MEGAN CROWLEY



Serrate leaf edges

© SEAN BLANEY



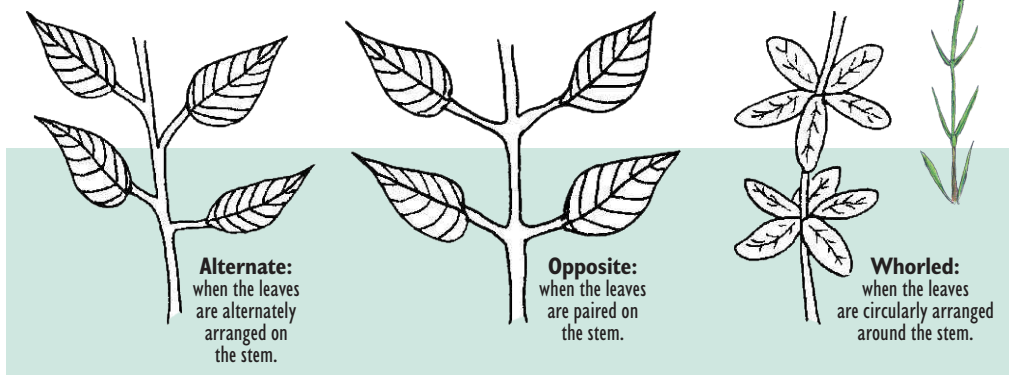
Opposite, sessile leaves

© MEGAN CROWLEY



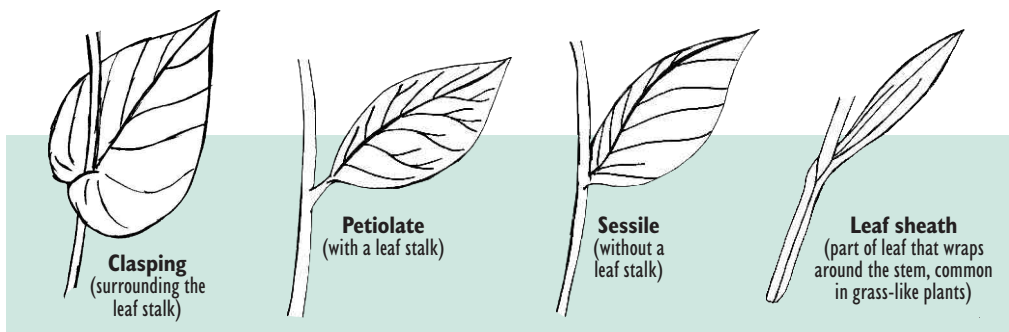
Linear, entire leaf

© MEGAN CROWLEY



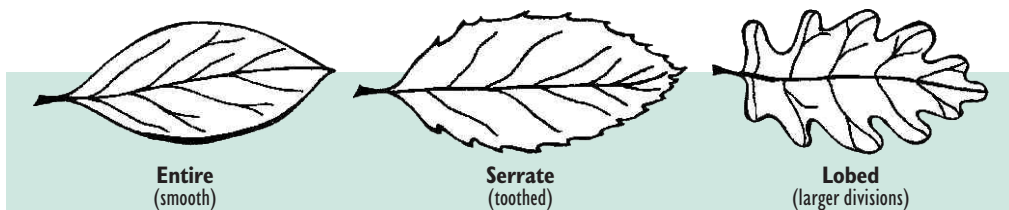
Leaf Arrangements

ALL ILLUSTRATIONS © JENNIFER MCKINNON



Leaf Attachments

ALL ILLUSTRATIONS © JENNIFER MCKINNON



Leaf edges (margins)

ALL ILLUSTRATIONS © JENNIFER MCKINNON



© SEAN BLANEY



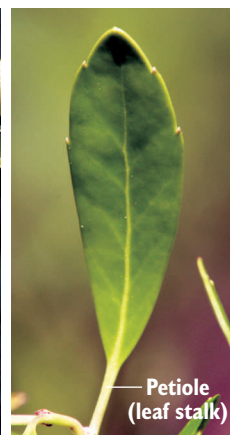
© MEGAN CROWLEY



© ALAIN BELLIVEAU



© JOHN HILTY



© ALAIN BELLIVEAU