



Red Chokeberry

Aronia arbutifolia

NS General Status Rank: Secure

SHRUBS : WOODY PLANTS



Red Chokeberry with ripe fruits

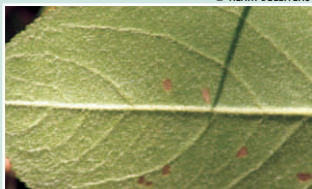
© ALAIN BELLIVEAU

© ALAIN BELLIVEAU

© ALAIN BELLIVEAU



Furry young stem and alternate leaves



Fuzzy leaf underside

© DAVID PATRIQUIN

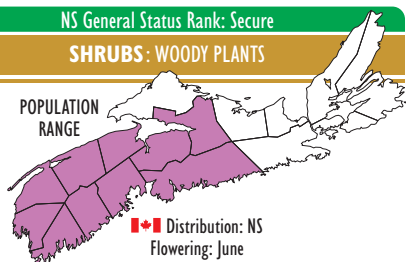
© ALAIN BELLIVEAU



Flowers



Leaf



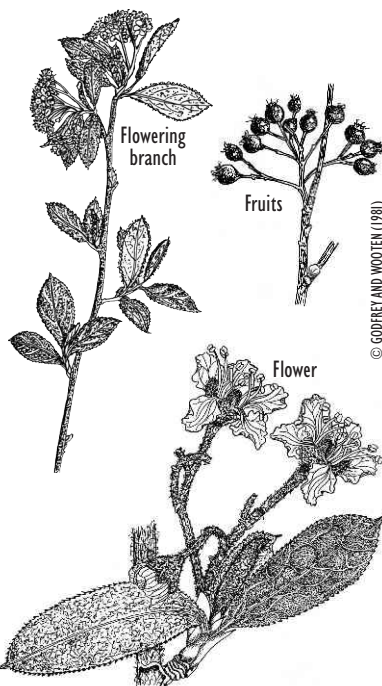
SIZE: Typically 1-2 m tall (can grow up to 4 m).

LEAVES: Wide near the tip and narrowing toward the base (obovate) with a sharp pointed tip and finely toothed edges. Alternately arranged along the stem and 3-7 cm long. The upper surface is smooth and dark green and the underside is covered in small woolly hairs and feels soft. They turn bright red in the fall.

STEM: Older branches are smooth with dark brown bark. Younger branches are covered in furry hairs.

FLOWERS: Small (1 cm long) and with 5 white petals. They are numerous, clustered at the tips of the upper branches and grow off long, narrow, hairy flower stalks (raceme).

FRUITS: Small, round, berry-like pomes, 5-6 mm wide. They are red when ripe (darker when developing), mature late in the season and stay on the plant well into the winter.



Habitat:

Wet sandy or rocky lakeshores and wetlands (acidic bogs and swamps).

Interesting point: Both Red and Black Chokeberry fruits are inedible and may be somewhat poisonous.

Similar species: Black Chokeberry (*Aronia melanocarpa*) has dark black fruit. Its leaf undersides, flower stalks and young branches are smooth and hairless.



Black Chokeberry

© SEAN BLANEY