

SIZE: Flower stalks can vary from 3-20 cm in size but are typically only 3 to 5 cm tall.

LEAVES: Very small and inconspicuous, forming a tiny turf of thin weak leaves up to 1 cm long near the base of the flower stalk in the substrate.

STEM: Flower stalk small and slender and mostly leafless. The upper section is somewhat zigzagged when bearing several flowers. The underground root-like branches bear small bladder-like insect traps which are difficult to observe.

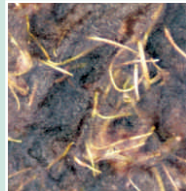
FLOWERS: Small, yellow and two-lipped (lower lip 4-7 mm long). One to ten flowers can be found alternately arranged along each stem on 0.5-1.5 cm long stalks. However, it is most common for plants to bear only tiny whitish self-fertilizing flowers which do not open.

FRUITS: Round capsules.

NOTES: This species is inconspicuous and difficult to detect when not in flower. It is a lakeshore species growing at the water's edge.

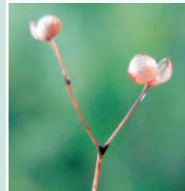


© SEAN BLANEY



© ALAIN BELLIVEAU

Leaves



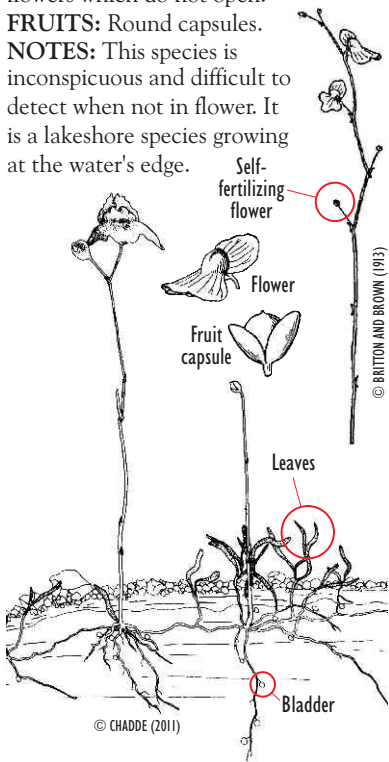
© MEGAN CROWLEY

Opened fruit capsules



© ALAIN BELLIVEAU

Yellow two-lipped flower



Habitat:

Wet peaty or sandy lakeshores

Interesting point: Before the carnivorous nature of the bladders was discovered, it was thought that the bladders were used for flotation purposes.



Small and slender

© SEAN BLANEY



Horned Bladderwort

© MEGAN CROWLEY

Similar species:

Horned Bladderwort (*Utricularia cornuta*) also has yellow flowers and grows along the lakeshore. The flower stalks in this species are up to 25 cm high, do not bear whitish self-fertilizing flowers and can form dense patches of yellow flowers.